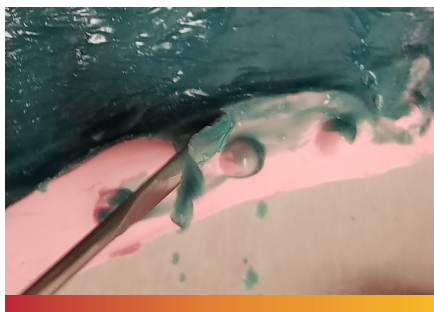


SCULPTACAST™ LIMERICK WAX



SculptaCast Limerick wax is a technically engineered, high-grade sculpture wax ideal for painting and slush casting. It is naturally clean burning with very low ash residue.

SculptaCast Limerick wax provides consistent results and the following application attributes:

- Low viscosity and fast setting rate, ideal for painting exceptionally fine detail, as well wide open surfaces, without the associated defects of bulging or lifting
- Fast set rate with a more rigid buildup than other traditional grades
- Least amount of contraction and shrinkage, essentially eliminating wax separation from mold walls and providing superior workability
- Less prone to stick to sculpture tools, making trimming and clean up easier
- Improved demold characteristics

SculptaCast Limerick wax is a one wax solution, providing optimal application properties for primary coats and providing suitable body for use as a backup wax. It is recommended as a one wax solution, but can be used as a prime wax only.

SculptaCast Limerick wax is sold in chunk form.

All SculptaCast waxes undergo stringent quality control testing in a state-of-the-art laboratory to ensure the highest level of quality.

Typical Material Properties*

Softening Point, Ring & Ball at 4 °F/min.	Needle Penetration (Hardness)	Ash Content	Color
154.5 ± 6 °F	11.7 ± 3.0 dmm	0-0.015%	Green

*Precizioned Ltd. has determined test method and provided analysis as noted herein. The levels referenced herein are only for general guidance and do not constitute a firm specification.

Handling Guidelines (Melting & Conditioning)

1. Melt wax at a minimum of 180-220 °F (82-104 °C) with regular agitation for proper heat transfer and to produce a homogenous blend.
2. Once the wax has completely melted, transfer the wax to the appropriate holding reservoir and condition the wax to the desired temperature. Allow the wax temperature to stabilize.

Note: refer to recommended application temperatures below for primary coat, backup and slushing.

Note: it is recommended that wax temperature not exceed 302 °F (150 °C).



RANSOM & RANDOLPH

3535 Briarfield Boulevard, PO Box 1570 | Maumee, OH 43537 USA
800.253.4502 | 419.865.9497 | 419.865.9997 (FAX) | www.ransom-randolph.com



Investing with Innovation™

SCULPTACAST™ LIMERICK WAX

Recommended Application Temperatures**

Painting Temperature (Primary Coat)	Painting Temperature (Backup)	Slushing Temperature
195-245 °F (91-118 °C)	175-195 °F (79-91 °C)	175-185 °F (79-85 °C)

**Actual melt and application temperatures will depend on individual circumstances of use.

Safety

Please read and understand the product SDS before handling these products.

As the conditions or methods of use are beyond our control, we do not assume any responsibility and expressly disclaim any liability for any use of this product. Information contained herein is believed to be true and accurate but all statements or suggestions are made without warranty, expressed or implied, regarding accuracy of the information, the hazards connected with the use of the material or the results to be obtained from the use thereof. Compliance with all applicable federal, state, and local regulations remains the responsibility of the user. All potential liability related to the sale and use of this product is limited to the cost of the particular goods sold in their respective transactions.

SculptaCast is a trademark of Precizioned Ltd.



RANSOM & RANDOLPH

3535 Briarfield Boulevard, PO Box 1570 | Maumee, OH 43537 USA
800.253.4502 | 419.865.9497 | 419.865.9997 (FAX) | www.ransom-randolph.com



Issue Date: July 9, 2019

Investing with Innovation™